



# GAT MONTHLY MEMBERSHIP PROGRESS REPORT

Results as of: 10/31/2021

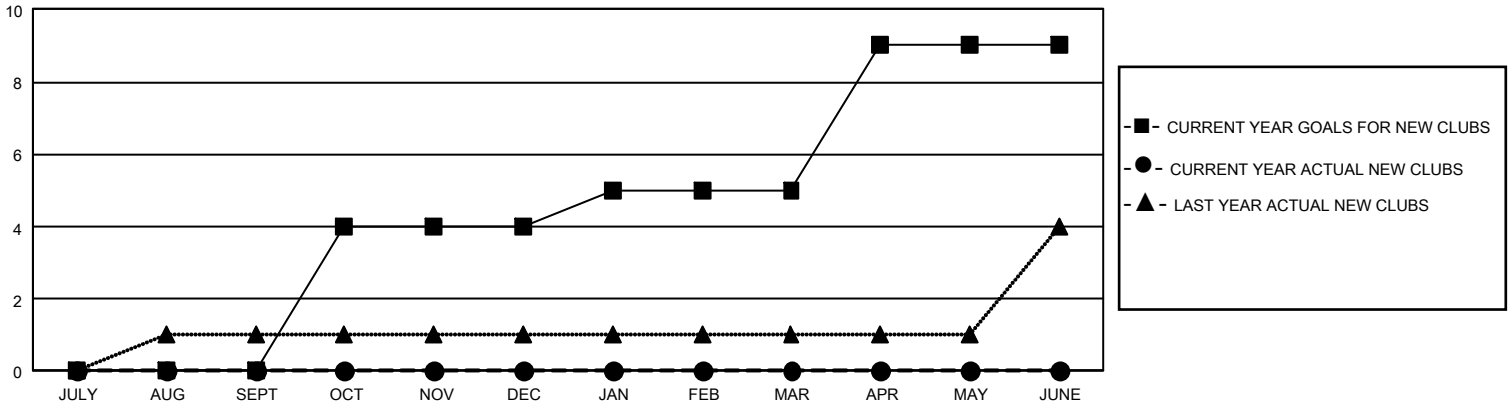
## GMT Constitutional Area 2, Group D

REPORT DOES NOT INCLUDE CLUBS IN UNDISTRICTED AREAS.

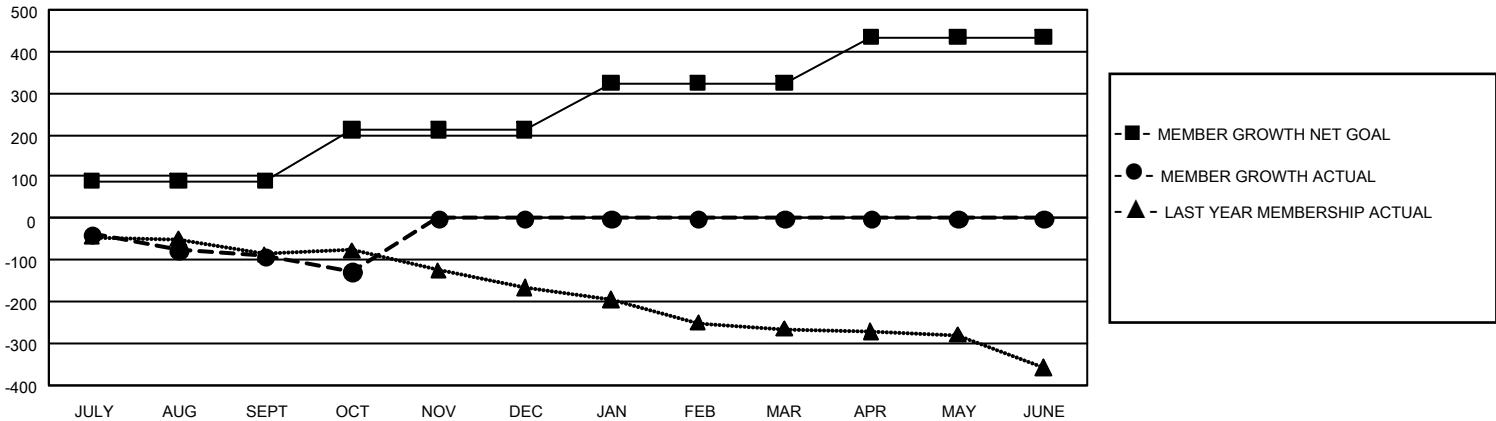
Clubs			
RESULTS FOR 2021-2022			
QUARTER	NEW CLUB GOAL	NEW CLUBS	DROPPED CLUBS
JULY/AUG/SEPT	0	0	4
OCT/NOV/DEC	12	0	0
JAN/FEB/MAR	3	0	0
APR/MAY/JUNE	12	0	0

Members			
RESULTS FOR 2021-2022			
QUARTER	MEMBER GROWTH NET GOAL	MEMBER GROWTH ACTUAL	DROPPED MEMBERS ACTUAL (including transfers)
JULY/AUG/SEPT	90	84	164
OCT/NOV/DEC	123	45	75
JAN/FEB/MAR	111	0	0
APR/MAY/JUNE	111	0	0

GOALS AND ACTUAL NEW CLUBS CUMULATIVE



GOALS AND ACTUAL MEMBERS CUMULATIVE



DROPPED CLUBS: 4	47 CLUBS OF 363 ADDED 1 OR MORE NEW MEMBERS	<u>GENDER DISTRIBUTION</u>	
<u>DROPPED MEMBERS</u>		MALE	5,052 (71.46%)
DECEASED	36	FEMALE	2,017 (28.53%)
CLUB CANCELLED	8	NON BINARY	0 (0.00%)
OTHER	195	PREFER NOT TO ANSWER	1 (0.01%)
TOTAL	239	TOTAL FAMILY UNIT MEMBERS	1,214
	<a href="#">CLICK HERE FOR CUMULATIVE MEMBERSHIP DATA</a>	FAMILY MEMBERS PAYING HALF DUES	618